

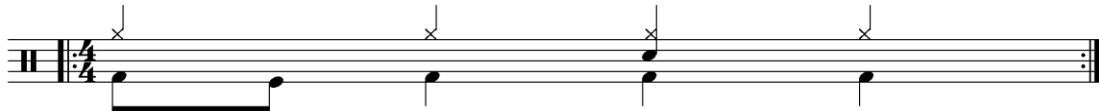
LEADING SIDE & SLAVE SIDE

example 1

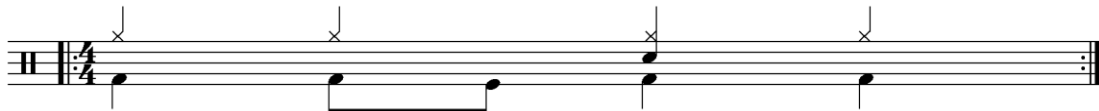


exercise 1

exercise 1a



exercise 1b



exercise 1c



exercise 1d



exercise 2

exercise 2a



exercise 2b



exercise 2c



exercise 2d



exercise 3

exercise 3a



exercise 3b



exercise 3c



exercise 3d



example 2



exercise 4

Single Bar Switch



exercise 5

2 Bar Switch



exercise 6

4 Bar Switch



exercise 7

8 Bar Switch

Exercise 7 consists of three staves of music in 4/4 time. The first staff begins with a treble clef and a key signature of one flat (Bb). It contains a sequence of eighth notes with 'x' marks above them, followed by four measures of rests indicated by a double slash (/). A circled number (4) is placed above the fourth measure of rests. The second staff continues the sequence of eighth notes with 'x' marks, followed by two measures of rests. The third staff begins with a circled number (4) above the first measure, followed by four measures of rests, and then concludes with a sequence of eighth notes with 'x' marks. The piece ends with a double bar line and repeat dots.

exercise 8

Single Bar Switch

Exercise 8 is a single staff of music in 4/4 time, starting with a treble clef and a key signature of one flat (Bb). It features a continuous sequence of eighth notes with 'x' marks above them. The piece concludes with a double bar line and repeat dots.

exercise 9

2 Bar Switch

Exercise 9 consists of two staves of music in 4/4 time, both starting with a treble clef and a key signature of one flat (Bb). Each staff contains a continuous sequence of eighth notes with 'x' marks above them. The first staff ends with a double bar line and repeat dots, while the second staff continues the sequence and also ends with a double bar line and repeat dots.

exercise 10

4 Bar Switch

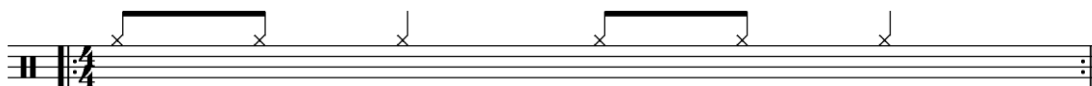
Exercise 10 consists of two staves of music in 4/4 time, both starting with a treble clef and a key signature of one flat (Bb). Each staff contains a sequence of eighth notes with 'x' marks above them, followed by two measures of rests indicated by a double slash (/). The first staff ends with a double bar line and repeat dots, while the second staff continues the sequence and also ends with a double bar line and repeat dots.

APPLYING MELODIES

while working on

ENDURANCE - INDEPENDENCE

Right Hand Pattern



exercise 11

Drum Reading

*Play each variation while reading the Melody on the snare with your Left or Right hand.

** Try to come up with more variations using different hand patterns / foot patterns

